



# Schwetzingen Palace and Gardens

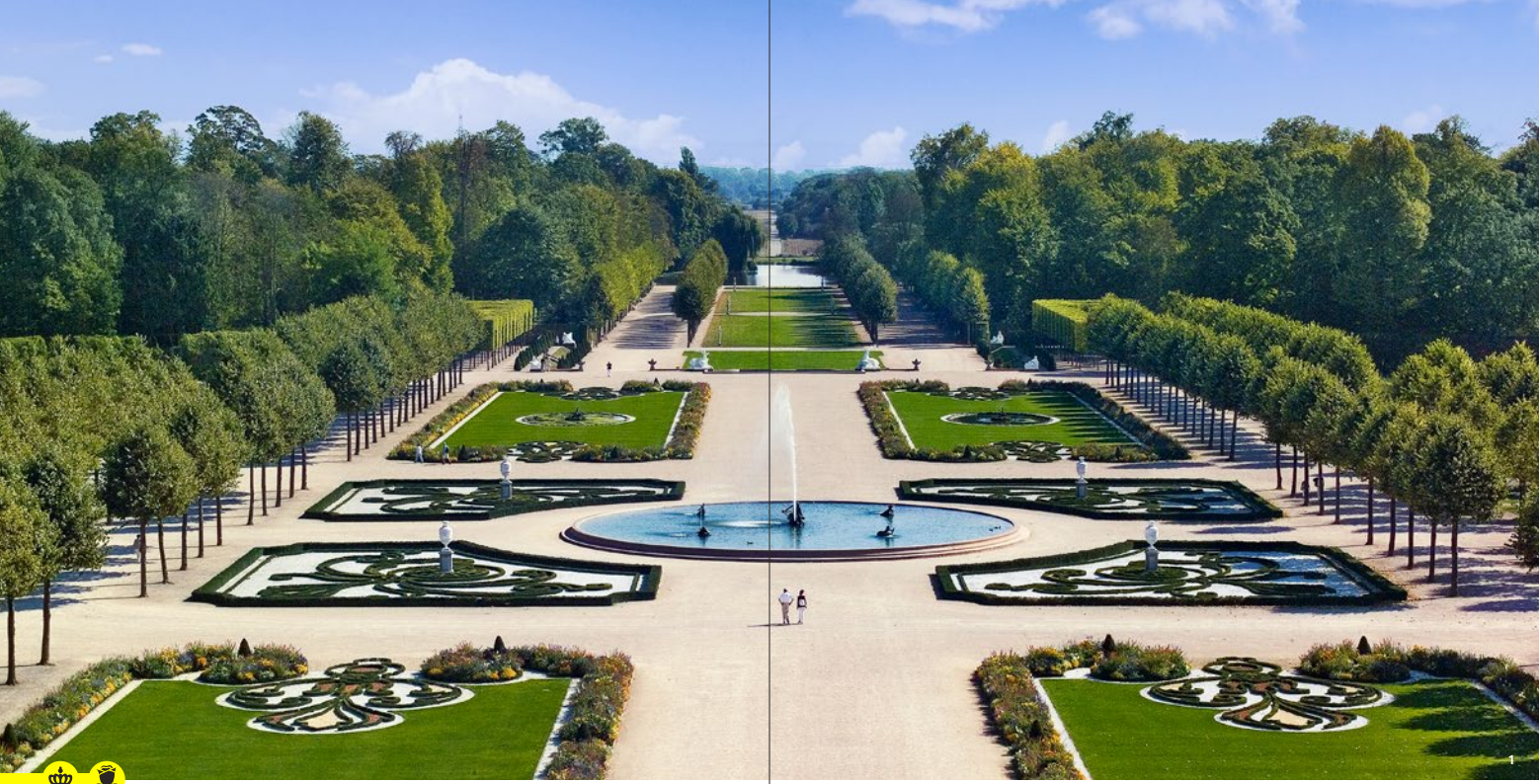
EXTRAORDINARY GARDENS OF  
EUROPEAN RENOWN



Visit. Marvel. Enjoy.



**Baden-Württemberg**  
State Palaces and  
Gardens



Elegant: The formal French grounds, with its one-of-a-kind circular parterre, is the centerpiece of the palace

### The summer residence of prince-electors of the Palatinate

The lush splendor of cherry and apple blossoms in spring, the rich green foliage and lively borders of flowers, the colorful leaves in autumn, or a quiet wintry hush—the Schwetzingen Palace Gardens offer visitors a wonderfully unique atmosphere in every season. It is an 18th-century *masterpiece of garden design*, presenting geometrically precise representative elements of the French style alongside the free landscape style seen in English gardens. Buildings, such as the Temple of Minerva or the Woodland Temple, as well as the array of sculptures in the gardens, all serve to highlight its unique character.

The artistic ensemble is rounded out by two crescents. The palace was the summer residence of Prince-Elector Carl Theodor. On the second floor, visitors can experience what life at the palace was actually like. Toilets and servant areas are also on display. Authentically furnished rooms with hand-printed wallpaper, designed in 1804 for Countess Luise Karoline von Hochberg, are located on the third floor.

In line with the contemporary ideal of *royal households as artistic centers*, countless concerts were held at the palace—a tradition that lives on today in the form of the Schwetzingen Festival and the Schwetzingen Mozartfest.



# Schwetzingen Palace (Schloss Schwetzingen) is famous for its beautiful and harmonious gardens. Remarkably, the original design, in all its diversity, survives to this day.

The origins of Schwetzingen Palace date back to 1350, when a knight's small moated castle occupied the site. After an eventful history, Schwetzingen flourished under Prince-Elector Carl Theodor von der Pfalz (1724–1799). The palace owes its current form to Prince-Elector Johann Wilhelm, who commissioned changes in 1697 and expanded it considerably by adding two side wings.

## A synthesis of the most prominent artists

Schwetzingen Palace reached the height of splendor under Prince-Elector Carl Theodor. He instructed leading landscape architects of the time to design his grounds, among them Nicolas de Pigage and later Friedrich Ludwig von Sckell. They began construction the large-scale project in 1749 and, supported by the most prominent artists, created an *exceptionally beautiful artistic synthesis* and variety. The central gardens boasts crescents,

The lapidarium with the precious originals of the garden sculptures



A symbol of tolerance, the garden mosque is one of the most fascinating buildings

pergola arcades, and a circular parterre and follows clear mathematical patterns in an entirely symmetrical and consistent pattern. At the end of the 18th century, landscaped sections were added to the Baroque garden, creating the “Arboretum Theodoricum”, one of the earliest examples of the English landscape garden in Germany.

## Magnificent Baroque bloom and strange worlds

Schwetzingen's palace garden is a cultural monument of European distinction, featuring *well over 100 sculptures* within its wonderful and surprising grounds. Picturesque structures lure visitors into strange and distant lands. The “Temple of Apollo”, a small, round building, houses a statue of the ancient Greek god of light and the arts, playing the lyre. The bath house is also worth a visit: a private haven in an elegant garden, and built like an Italian villa. And, most spectacularly the park's “Turkish Garden” boasts a mosque

Exotic potted plants are kept in the orangery during the winter months





View from the Arion Fountain to the central building: The core of the palace was originally a knights' moated castle

designed by Nicolas de Pigage, the only structure of its kind in a German garden. Adorned with numerous oriental details, the building served no religious purpose but was purely decorative.

## A cultural highlight

The palace rooms are furnished with pieces from the 18th and early 19th centuries. One spectacular feature in the palace is the prince-electors' court theater in the northern crescent. This "palace theater" is still used for performances to this day. *It is the oldest surviving gallery theater in Europe.*

Worth a visit in the crescents: the magnificent palace theater



# Visitor information

## Opening hours and guided tours

**Palace** Open all year round;  
Viewing only possible on a tour;  
The palace theater can only be visited by taking a special tour

**Palace gardens** Open all year round;  
Visits possible without a guided tour;  
Guided tours available on a seasonal basis

Please check our website or call our hotline on +49 7251 74-27 70 before your visit to find out current opening and closing times.

Our website also provides information on accessibility, discounts, special tours and other important details relevant to your visit.

## Current information



### At a glance

For details of our current opening times, tours, events, admission prices and catering, see:  
[www.schloss-schwetzingen.de/en/visitor-information](http://www.schloss-schwetzingen.de/en/visitor-information)

## Contact and information

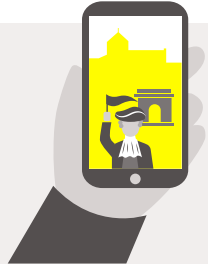
**Schwetzingen Palace and Gardens**  
Schloss Mittelbau  
68723 Schwetzingen, Germany  
[www.schloss-schwetzingen.de/en](http://www.schloss-schwetzingen.de/en)

**Tour Information and registration**  
Service Center Schlösser Touren GbR  
Phone +49 6221 6 58 88-0  
[service@schloss-schwetzingen.com](mailto:service@schloss-schwetzingen.com)

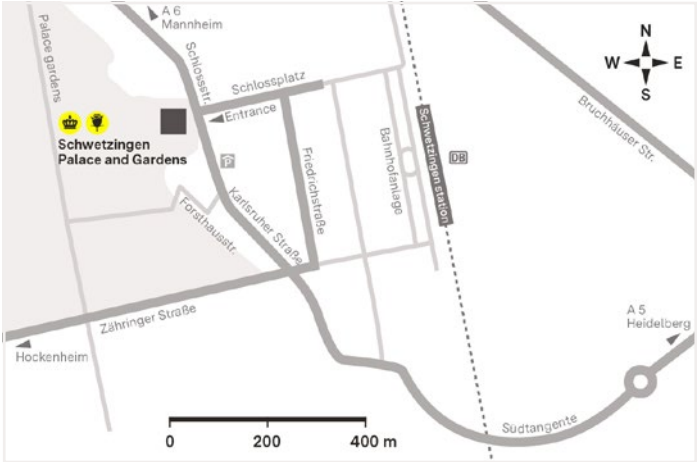
## Make your visit a truly special one



Simply download the free “Monument BW” app. Select a monument in the app. Tap on “Tours” to download the tour of your choice.



## How to find us



Schwetzingen Palace and Gardens is approximately a 10 minute walk from Schwetzingen train station.  
Further information, including on charging stations, can be found online.

## Information about all our monuments

### Staatliche Schlösser und Gärten Baden-Württemberg

Schlossraum 22a  
76646 Bruchsal, Germany

Phone +49 7251 74-27 70  
Daily 8:00 AM–8:00 PM  
(information only,  
no reservations/ticket sales)  
info@ssg.bwl.de



[www.schloesser-und-gaerten.de/en](http://www.schloesser-und-gaerten.de/en)