

VISITOR INFORMATION

HOURS	04/01 – 11/01	11/02 – 03/27
PRINCE'S LITTLE HOUSE	Mon – Sun 10:00 AM – 5:00 PM <i>Last admission 30 minutes before closing</i>	closed

TOURS	04/01 – 11/01	11/02 – 03/27
"DROSTE-HÜLSHOFF'S PRINCE'S LITTLE HOUSE"	Mon – Sun 4:00 PM <i>Tour in German; Group tours by arrangement</i>	no tours

ADMISSION	04/01 – 11/01
PRINCE'S LITTLE HOUSE (incl. tour)	
Adults	€ 5.00
Discounted	€ 2.50
Families	€ 12.50
Groups of 10 or more	€ 4.50 (per person)

COMBINATION TICKET	(Prince's Little House and Meersburg New Palace)
Adults	€ 8.00
Discounted	€ 4.00
Families	€ 20.00
Groups of 10 or more	€ 7.20 (per person)

Visit our website for more information on disability access, discounts, special tours and other important details regarding your visit.

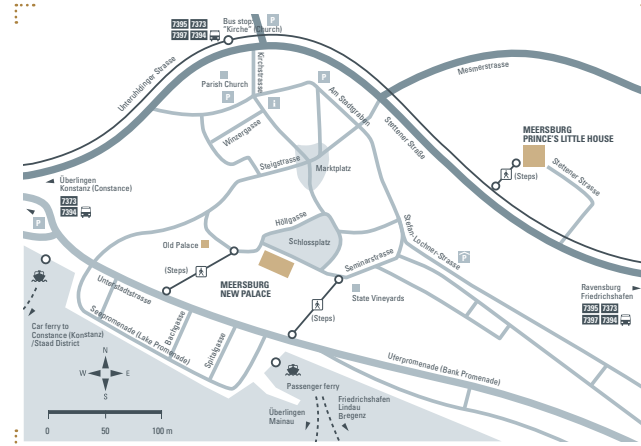
CONTACT

MEERSBURG PRINCE'S LITTLE HOUSE
Stettener Strasse 11
88709 Meersburg
Phone +49(0)75 32.60 88
Fax +49(0)75 32.80 79 41 - 19
info@fuerstenhaeusle.de
www.fuerstenhaeusle.de/en

Version: 09/2020; All information subject to change!



HOW TO FIND US



GETTING THERE

By public transport: Use the bus routes from Ravensburg to Konstanz via Meersburg or from Friedrichshafen to Überlingen/Konstanz via Meersburg.

INFORMATION ABOUT ALL OF OUR MONUMENTS

Staatliche Schlösser und Gärten Baden-Württemberg
Schlossraum 22a · 76646 Bruchsal · Germany

Phone +49(0)72 51.74 - 27 70
Daily 8:00 AM – 8:00 PM
(information only, no reservations/ticket sales)
info@ssg.bwl.de



www.schloesser-und-gaerten.de/en



ANNETTE VON DROSTE-HÜLSHOFF'S IDYLIC HOME

MEERSBURG PRINCE'S LITTLE HOUSE

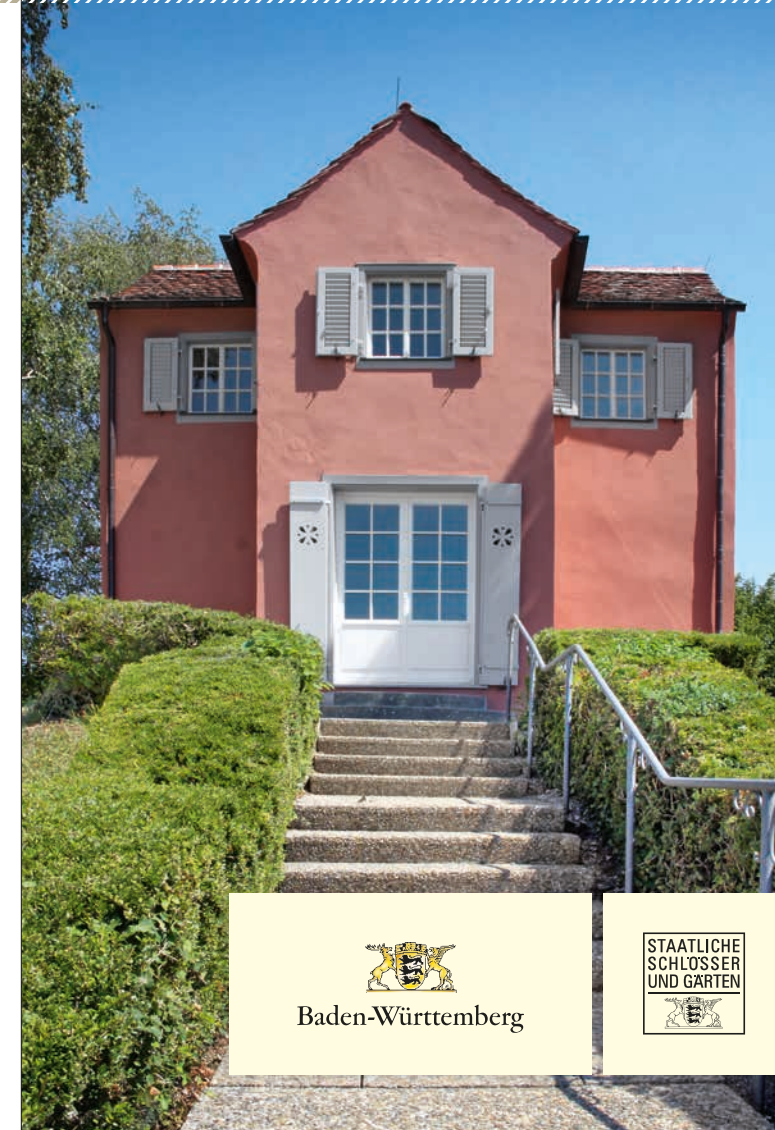


IMAGE CREDIT: SSG/LMZ; cover photo Bernhard Winkel; 1, 2, 3 Staatliche Schlösser und Gärten; 4 Stefan Hauswirth // Design concept: www.fungkommunikation.de

SSG_OBBEY_128_MeersburgPFL_GR_01_21-22


Baden-Württemberg

STAATLICHE
SCHLÖSSER
UND GÄRTEN


The historical Prince's Little House (*Fürstenhäusle*) in Meersburg offers a breathtaking view of Lake Constance and gives fascinating insight into the life and works of famous poet Annette von Droste-Hülshoff.

Built in appreciation of the beautiful surrounding countryside, Meersburg Prince's Little House is nestled *in an idyllic spot* enveloped by grapevines on a hill overlooking Meersburg. It gets its name from the prince-bishops who once stayed here. In fact, it was commissioned by the Canon of Constance (later Prince-Bishop of Constance) Jakob Fugger in 1600. The building was constructed in the shape of a cross and features two architectural styles, which can be seen in the vine-covered cottage and the two-story pavilion. The Prince-Bishops of Constance used it as a private refuge until secularization took hold in German states.

ANNETTE VON DROSTE-HÜLSHOFF'S PLANNED RETIREMENT HOME

Poet and composer Annette von Droste-Hülshoff purchased the building, surrounding vineyard and garden at auction in 1843.

As she described in her letters, she had her "priceless gem" renovated so that she could live and write in her favorite place in the world. Today, she is best known for her classic book *The Jew's Beech*. Her *lifestyle* shattered the period's conventions of the female experience. The vines, the garden with its promenade and quiet corners, and the spectacular view—aspects that von Droste-Hülshoff loved about the property and grounds—are still intact today.

A LITERARY OASIS

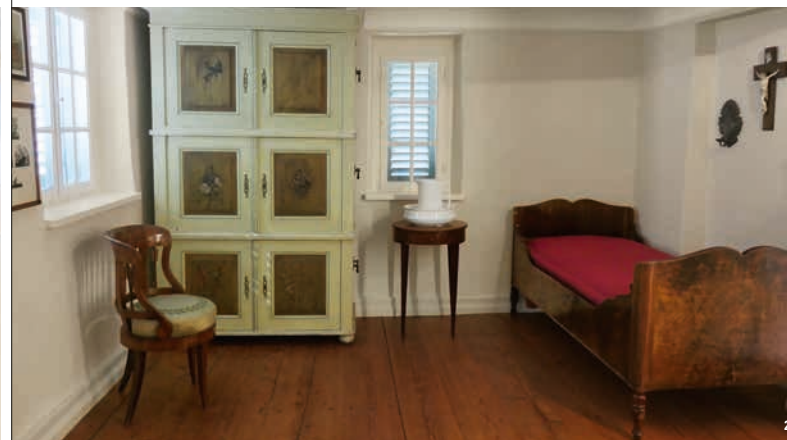
Although her premature death meant that the poet never realized her dream of making this her home, the house's interior design are modeled after the ideas described in her letters. The furnished rooms, for instance her "Swallow's Nest" refuge on the top floor and the parade room on the ground floor, which she envisioned as her salon, enable visitors to better understand Annette von Droste-Hülshoff as a person and comprehend the era she lived in. *The Biedermeier-era furnishings*, including the square piano, portraits and manuscripts, make visitors feel like they are paying the poet a personal visit and entering her social sphere. A previously unknown portrait shows her close relationship with Levin Schücking, while the poet's passion for collecting can be seen in the multitude of display cases. Visitors can hear from the poet and her nearest and dearest in the captivating new visitor room. The use of various media enhances the exhibit and places the focus on the Prince's Little House and von Droste-Hülshoff's era. The garden and terrace, with their breathtaking views spanning as far as the Alps, are ideal places to sit and relax.



3



1



2

❖ Left: The letters and images at the secretary desk in the parade room on the ground floor give an impression of von Droste-Hülshoff's popularity

❖ Right: The bedroom on the top floor has been furnished according to von Droste-Hülshoff's ideas

❖ Top: The contemporary square piano demonstrates the important role music played in von Droste-Hülshoff's life. Especially as she almost became a composer, not a writer